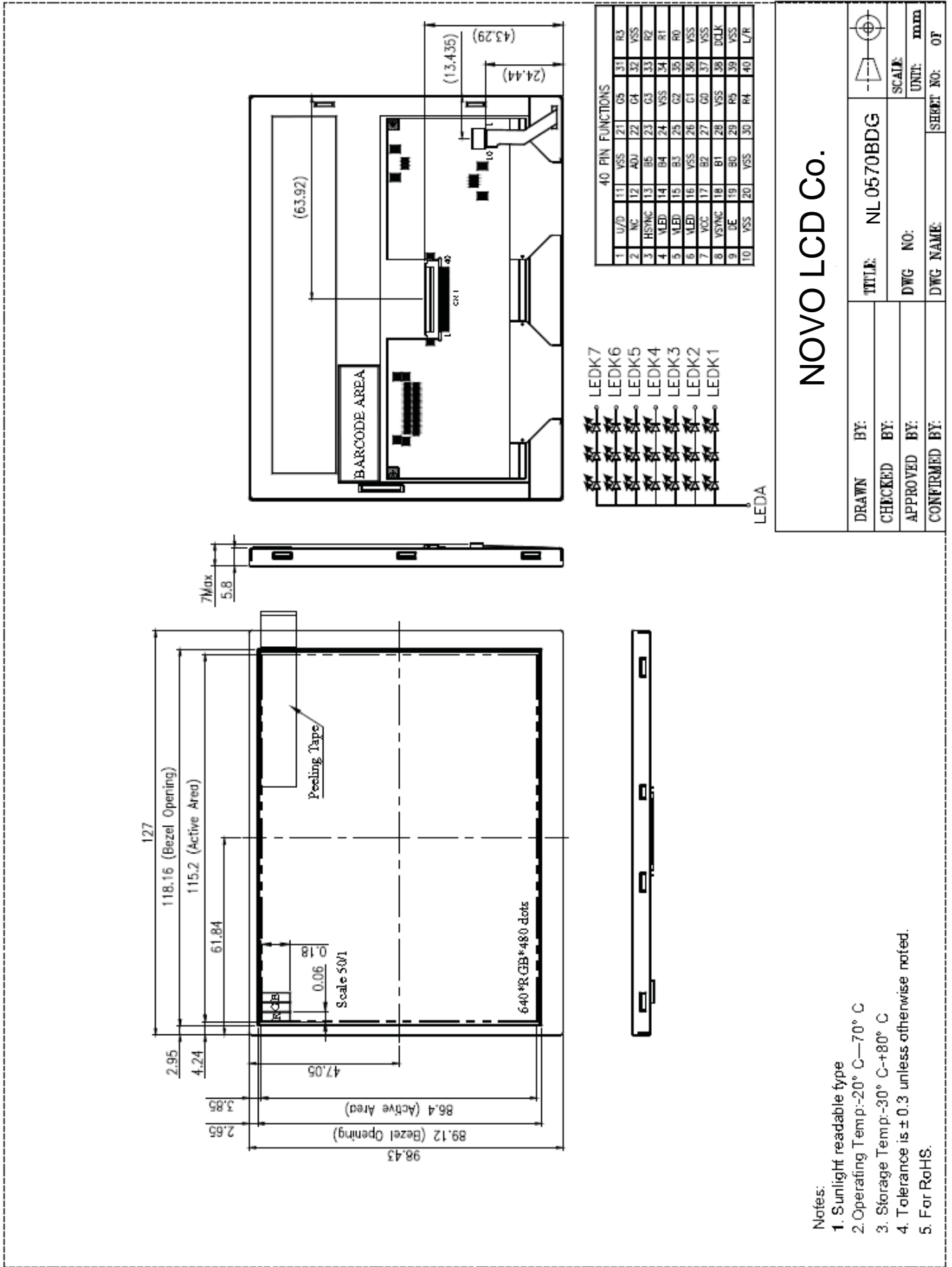


4. Outline Drawing



NOVO LCD Co.

DRAWN BY:	BY:	TITLE:	NL 0570BDG	SCALE:	1:1
CHECKED BY:	BY:	DWG NO.:		UNIT:	mm
APPROVED BY:	BY:	DWG NAME:		SHEET NO.:	OF
CONFIRMED BY:	BY:				

- Notes:
1. Sunlight readable type
 2. Operating Temp: -20° C—70° C
 3. Storage Temp: -30° C—+80° C
 4. Tolerance is ± 0.3 unless otherwise noted.
 5. For RoHS.