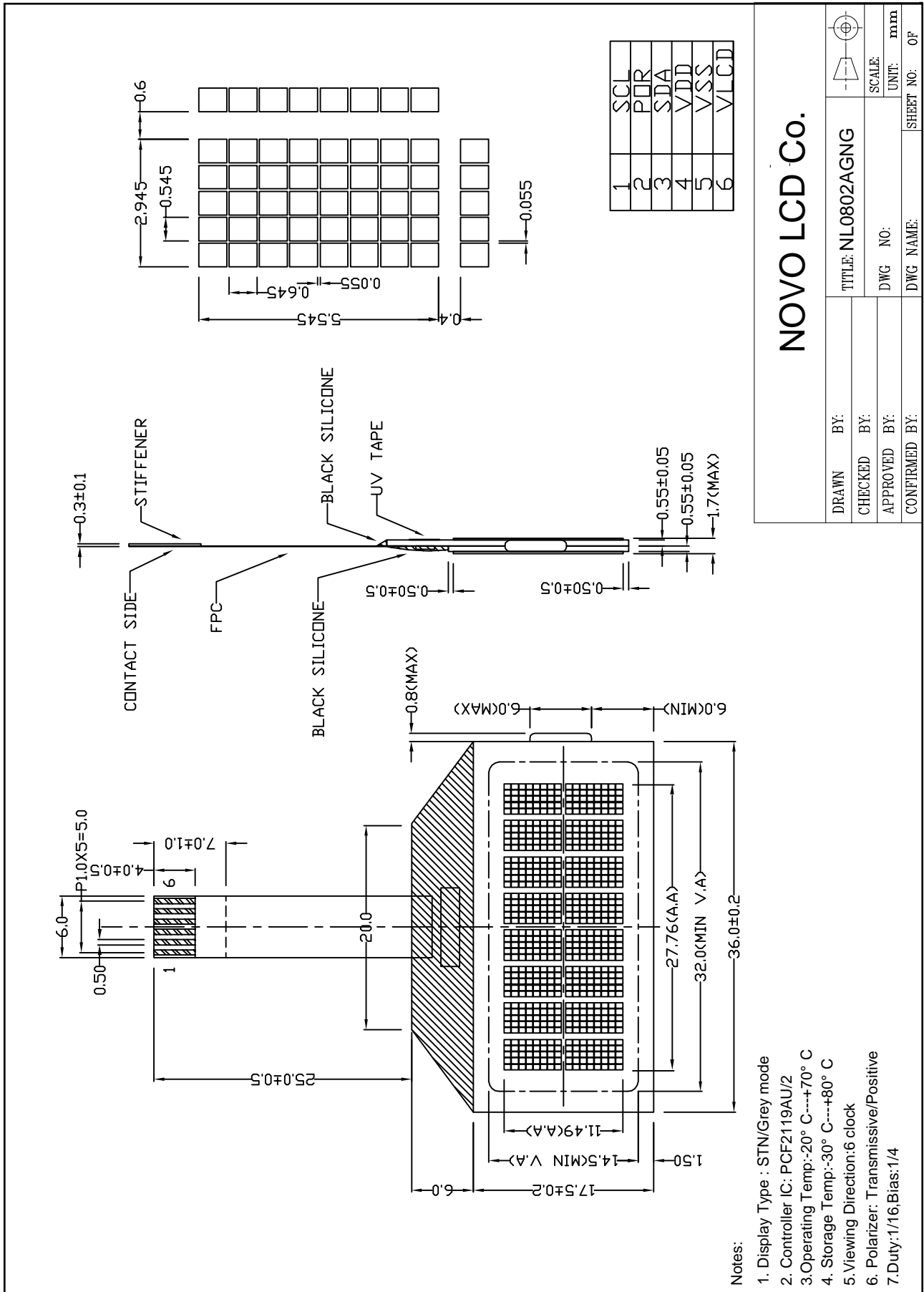


Outline Drawing



Notes:

1. Display Type : STN/Grey mode
2. Controller IC: PCF2119AU/2
3. Operating Temp: -20° C---+70° C
4. Storage Temp: -30° C---+80° C
5. Viewing Direction: 6 clock
6. Polarizer: Transmissive/Positive
7. Duty: 1/16, Bias: 1/4

NOVO LCD Co.

TITLE: NL0802AGNG	SCALE:	UNIT: mm
DWG NO:	DWG NO:	SHEET NO: OF
DRAWN BY:	CHECKED BY:	APPROVED BY:
CONFIRMED BY:		