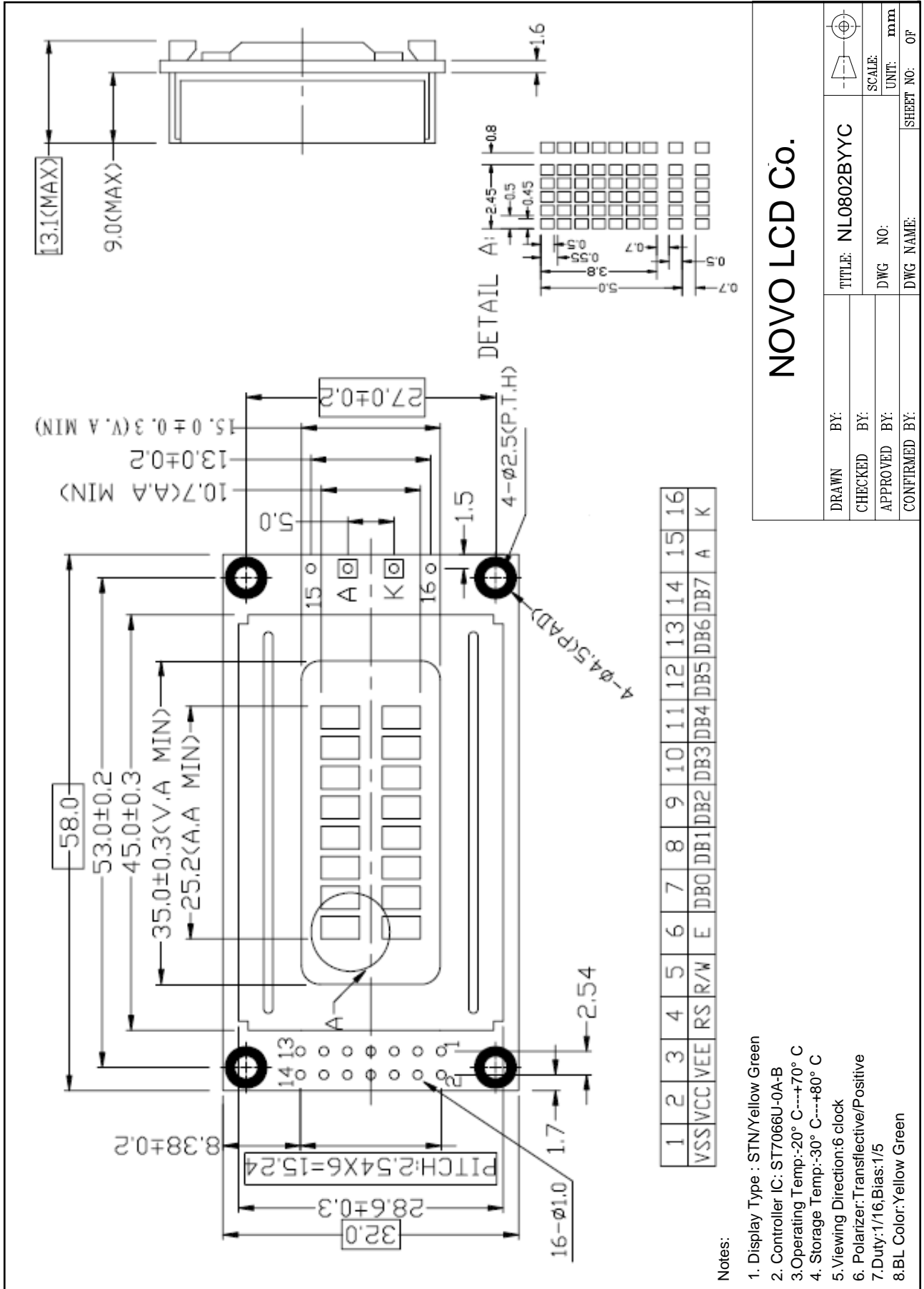


Outline Drawing



Notes:

1. Display Type : STN/Yellow Green
2. Controller IC: ST7066U-0A-B
3. Operating Temp:-20° C---+70° C
4. Storage Temp:-30° C---+80° C
5. Viewing Direction:6 clock
6. Polarizer:Transflective/Positive
- 7.Duty:1/16,Bias:1/5
- 8.BL Color:Yellow Green

NOVO LCD Co.

DRAWN BY:	TITLE: NL0802BYYC	
CHECKED BY:	DWG NO:	SCALE: mm
APPROVED BY:	DWG NAME:	UNIT: mm
CONFIRMED BY:	SHEET NO:	OF