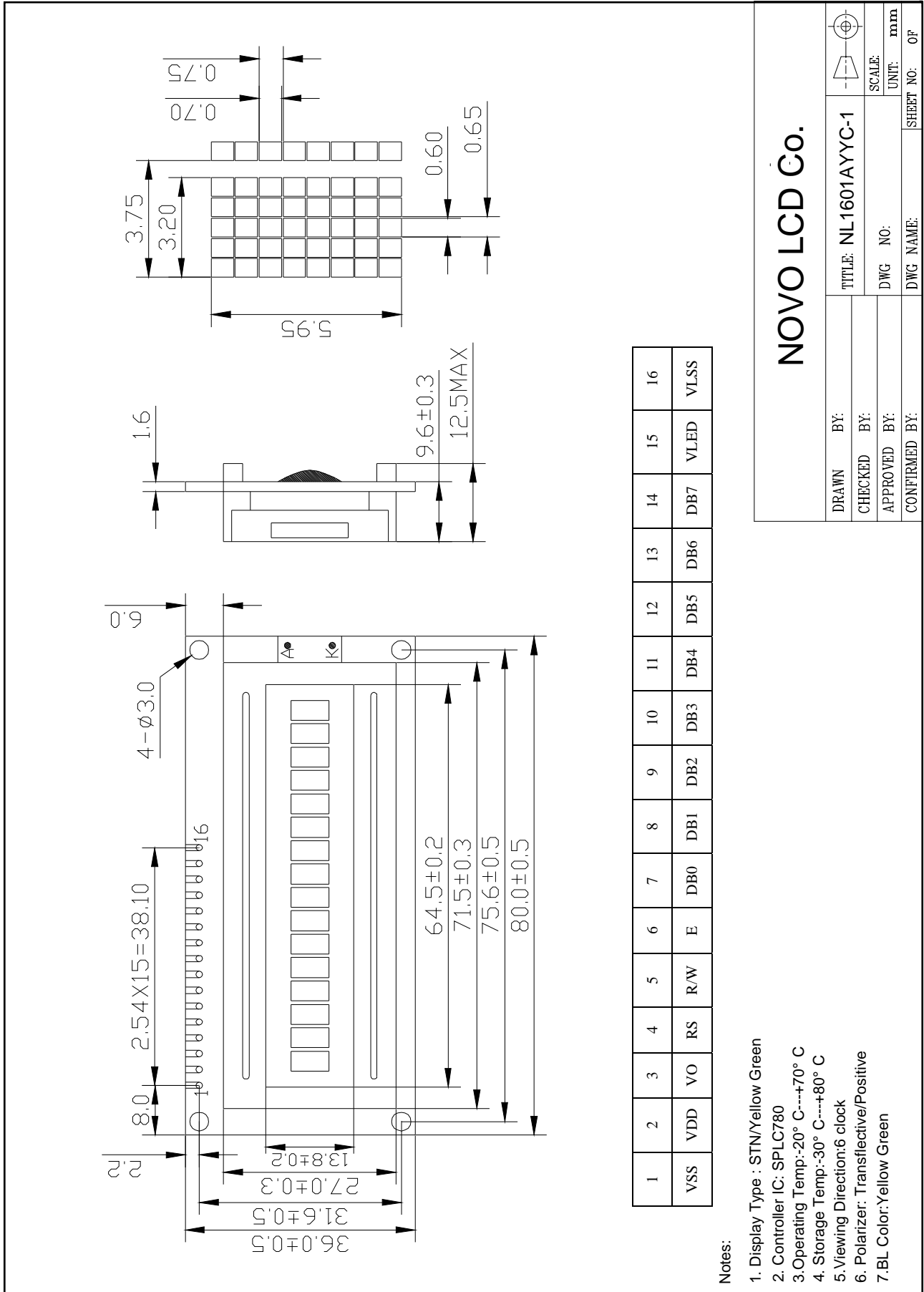


Outline Drawing



1	2	3	4	5	6	7	8	9	10	11	12	13	14	15	16
VSS	VDD	VO	RS	R/W	E	DB0	DB1	DB2	DB3	DB4	DB5	DB6	DB7	VLED	VLSS

Notes:

1. Display Type : STN/Yellow Green
2. Controller IC: SPLC780
3. Operating Temp: -20° C----+70° C
4. Storage Temp: -30° C----+80° C
5. Viewing Direction: 6 clock
6. Polarizer: Transflective/Positive
7. BL Color: Yellow Green

NOVO LCD Co.

DRAWN BY:	BY:	TITLE: NL1601AYYC-1	
CHECKED BY:	BY:	DWG NO:	SCALE:
APPROVED BY:	BY:	DWG NAME:	UNIT: mm
CONFIRMED BY:	BY:	SHEET NO:	OF