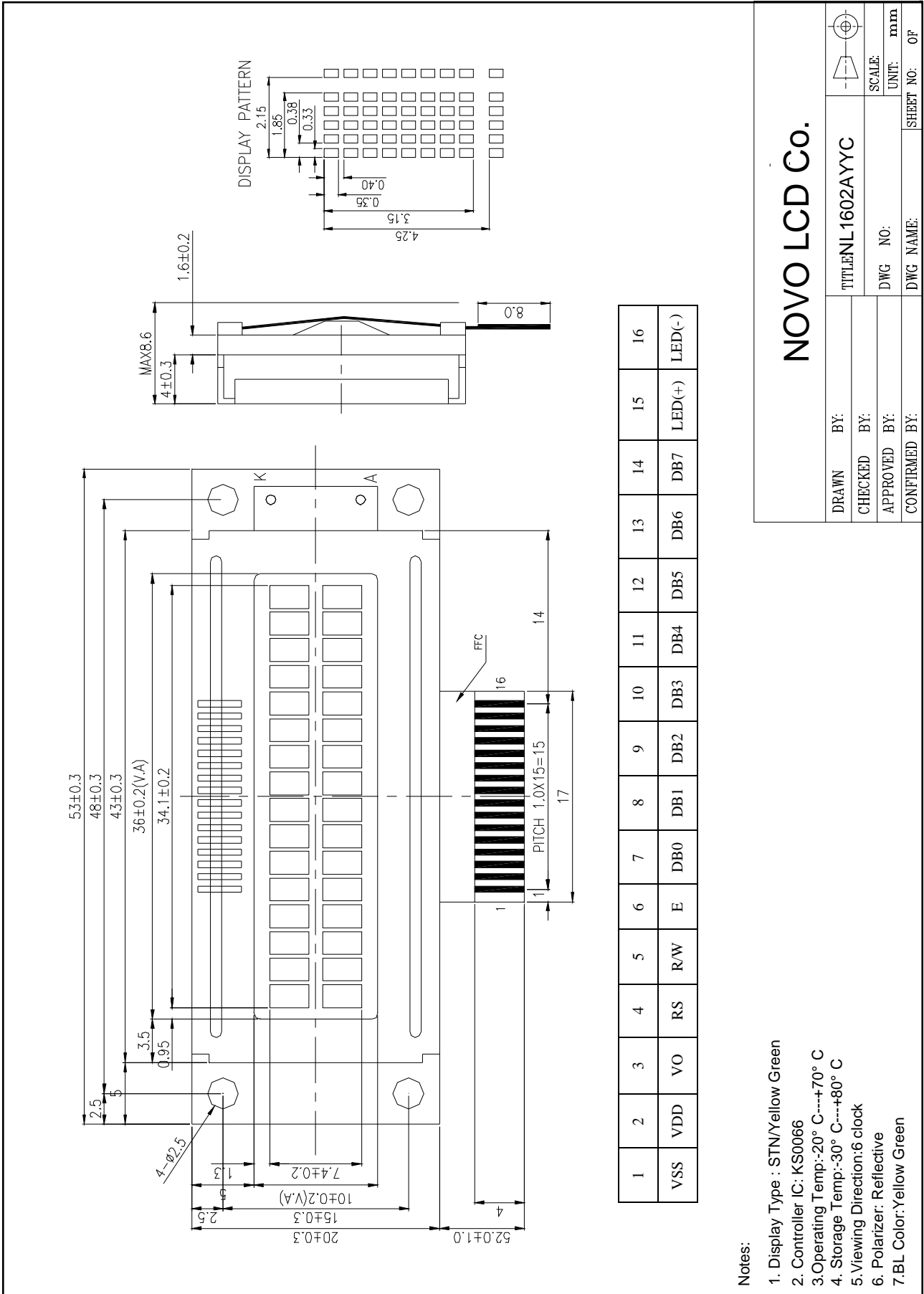


Outline Drawing



1	2	3	4	5	6	7	8	9	10	11	12	13	14	15	16
VSS	VDD	VO	RS	R/W	E	DB0	DB1	DB2	DB3	DB4	DB5	DB6	DB7	LED(+)	LED(-)

Notes:

1. Display Type : STN/Yellow Green
2. Controller IC: KS0066
3. Operating Temp: -20° C---+70° C
4. Storage Temp: -30° C---+80° C
5. Viewing Direction: 6 clock
6. Polarizer: Reflective
7. BL Color: Yellow Green

NOVO LCD Co.

DRAWN BY:	TITLE: NL1602AYYC	
CHECKED BY:	DWG NO:	SCALE:
APPROVED BY:	DWG NAME:	UNIT: mm
CONFIRMED BY:	SHEET NO:	OF