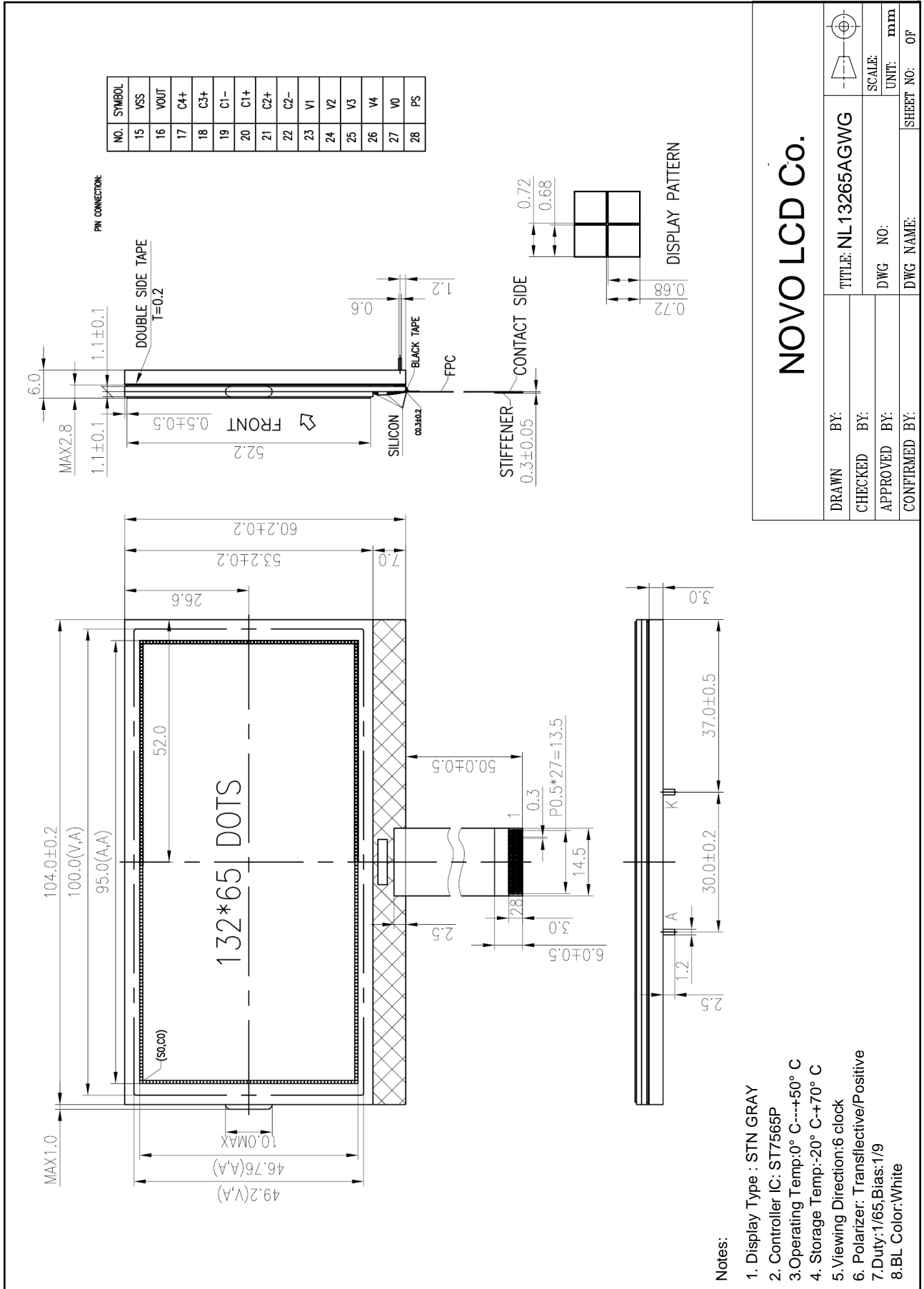


Outline Drawing



Notes:

1. Display Type : STN GRAY
2. Controller IC: ST7565P
3. Operating Temp.:0° C---+50° C
4. Storage Temp.:20° C--+70° C
5. Viewing Direction:6 clock
6. Polarizer: Transflective/Positive
7. Duty:1/65,Bias:1/9
8. BL Color:White

NOVO LCD Co.

DRAWN BY:	TITLE: NL 13265AGWG	SCALE:	mm
CHECKED BY:	DWG NO:	UNIT:	OF
APPROVED BY:	DWG NAME:	SHEET NO:	OF
CONFIRMED BY:			