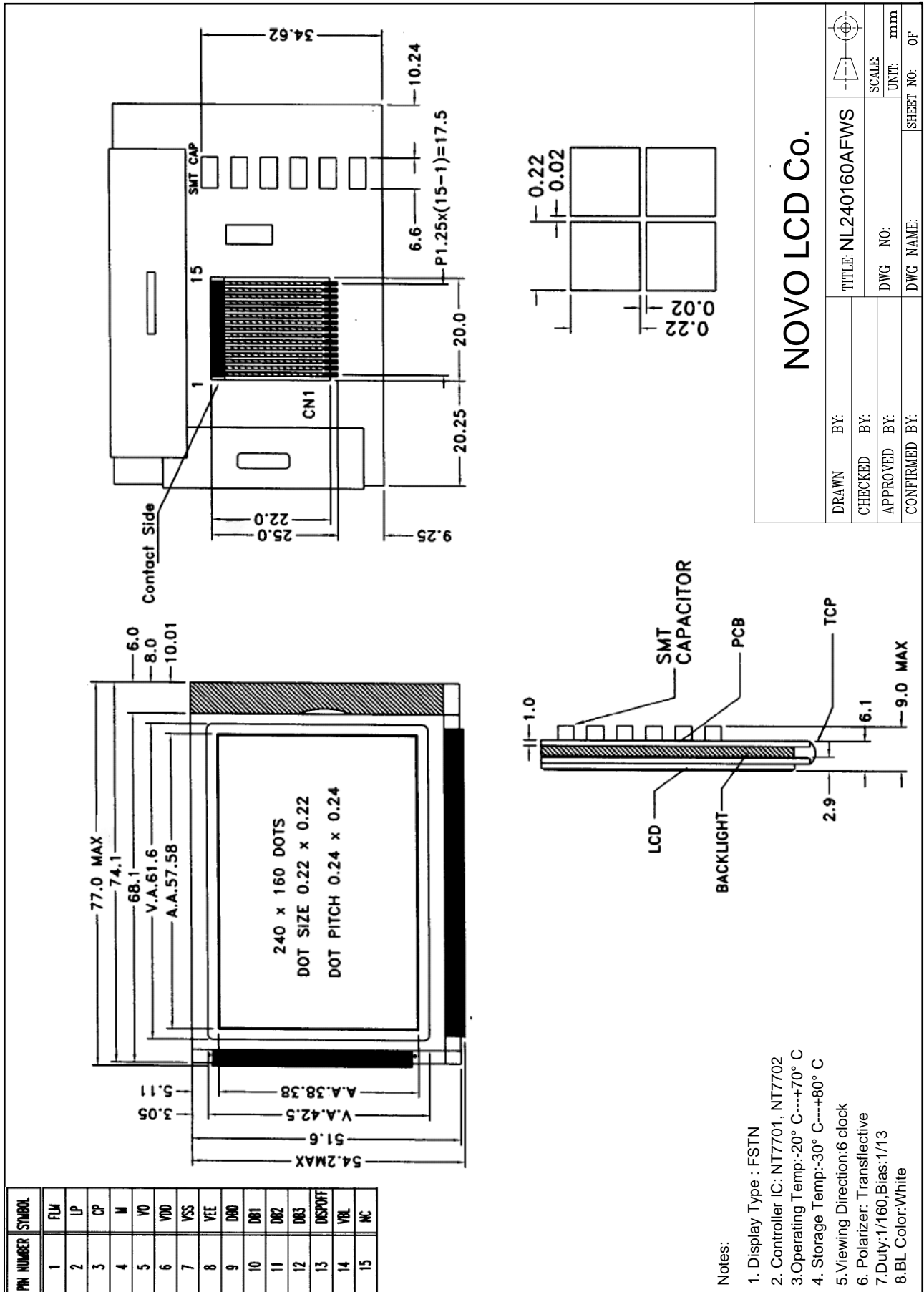


Outline Drawing



NOVO LCD Co.

DRAWN BY:	TITLE: NL240160AFWS	
CHECKED BY:	DWG NO:	SCALE:
APPROVED BY:	DWG NAME:	UNIT: mm
CONFIRMED BY:	SHEET NO:	OF

- Notes:
1. Display Type : FSTN
  2. Controller IC: NT7701, NT7702
  3. Operating Temp: -20° C----+70° C
  4. Storage Temp: -30° C----+80° C
  5. Viewing Direction: 6 clock
  6. Polarizer: Transflective
  7. Duty: 1/160. Bias: 1/13
  8. BL Color: White