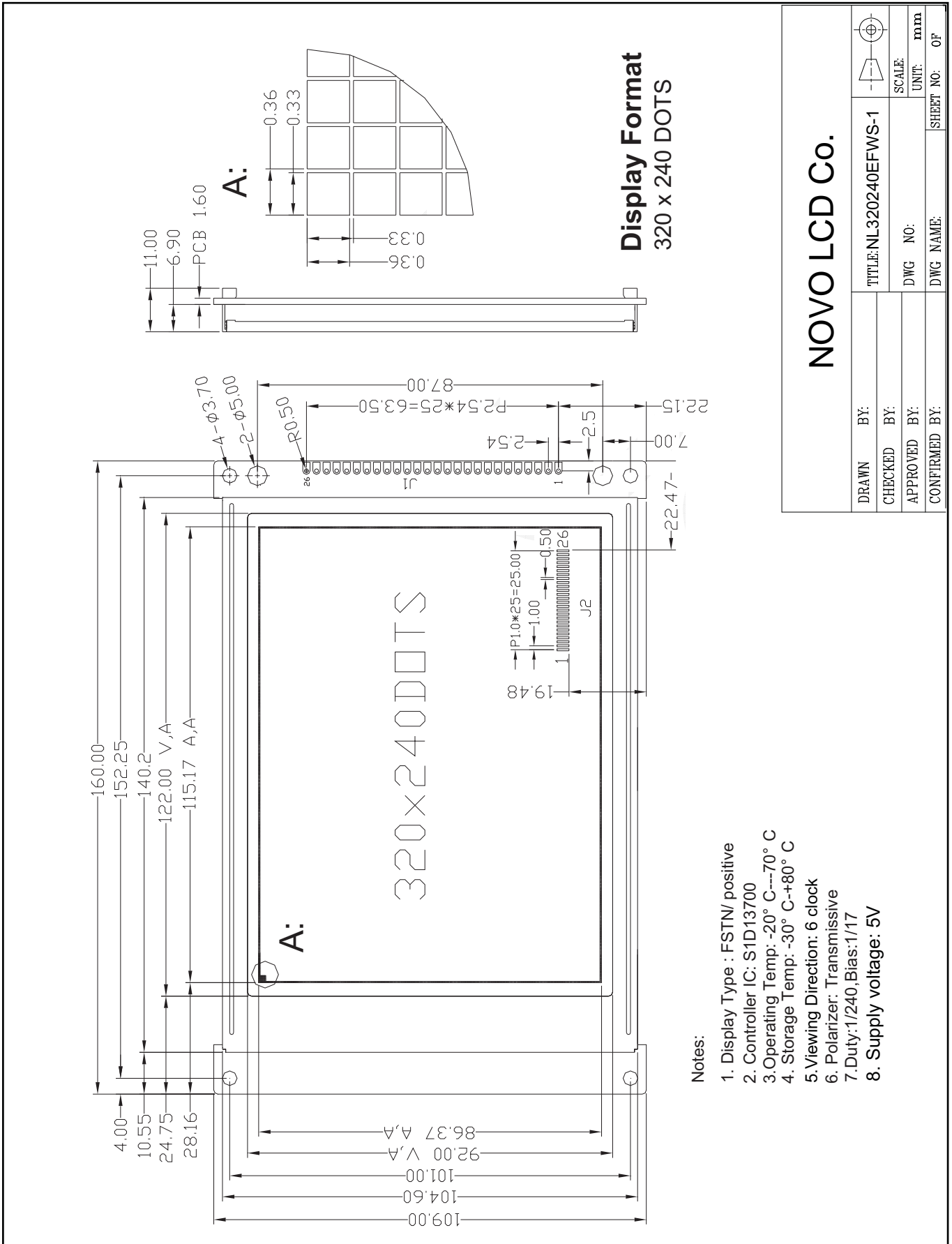


Outline Drawing



Notes:

1. Display Type : FSTN/ positive
2. Controller IC: S1D13700
3. Operating Temp: -20° C---70° C
4. Storage Temp: -30° C--+80° C
5. Viewing Direction: 6 clock
6. Polarizer: Transmissive
7. Duty: 1/240, Bias: 1/17
8. Supply voltage: 5V