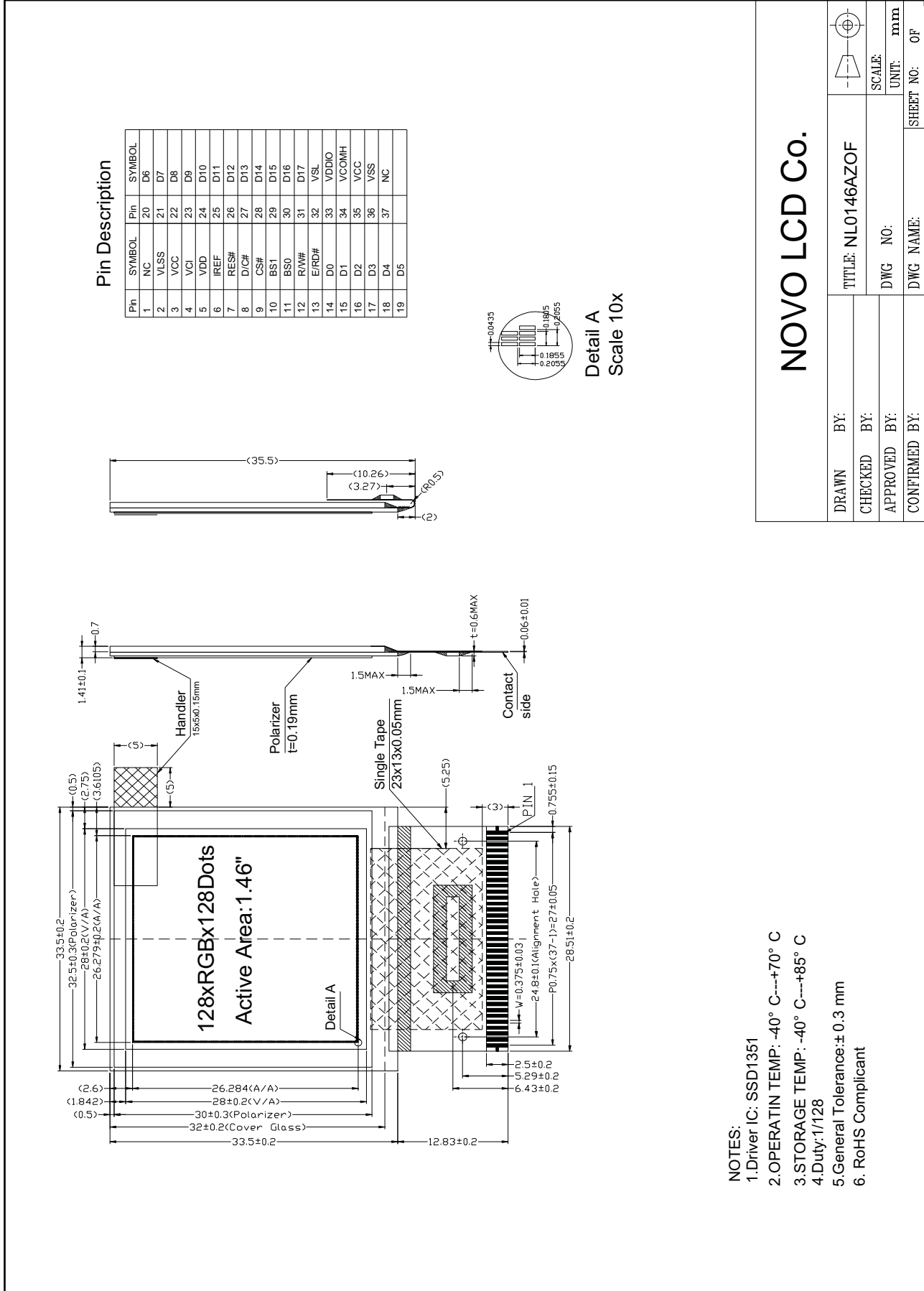
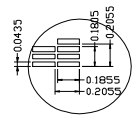


Outline Drawing



Pin Description

Pin	SYMBOL	Pin	SYMBOL
1	NC	20	D6
2	VLSS	21	D7
3	VCC	22	D8
4	VCI	23	D9
5	VDD	24	D10
6	IREF	25	D11
7	RES#	26	D12
8	D/Ch	27	D13
9	CS#	28	D14
10	BS1	29	D15
11	BS0	30	D16
12	R/W#	31	D17
13	E/RD#	32	VSL
14	D0	33	VDDIO
15	D1	34	VCOMH
16	D2	35	VCC
17	D3	36	VSS
18	D4	37	NC
19	D5		



Detail A
Scale 10x

- NOTES:
- 1.Driver IC: SSD1351
 - 2.OPERATIN TEMP: -40° C---+70° C
 - 3.STORAGE TEMP: -40° C---+85° C
 - 4.Duty:1/128
 - 5.General Tolerance:± 0.3 mm
 6. RoHS Compliant

NOVO LCD Co.

DRAWN BY:	TITLE: NL0146AZOF	
CHECKED BY:	DWG NO:	SCALE:
APPROVED BY:	DWG NAME:	UNIT: mm
CONFIRMED BY:		SHEET NO: OF